



Since 1985

# Silo Fluidizer *with* Metal Detectable Disk

***The latest in Solimar innovations addresses concerns from industries that require an extra level of safety.***



Instances of Solimar fluidizer disks contaminating product are extremely rare, but disks that have been mechanically damaged during bin cleaning, by extreme air pressures or improper installation could potentially cause a problem. Designed to meet the stringent process requirements primarily of the dairy, pharmaceutical and food related industries; Solimar Pneumatics has developed the first Metal Detectable Fluidizer Disk. Your only choice when zero contamination is a must.



**The grey disk, shown in the center, is the industries first silicone metal detectable disk.**

Note: Due to the impregnated ferrous oxide, the Metal Detectable Disk is only available in grey.

## Why Solimar Silo Fluidizers work where others have failed:

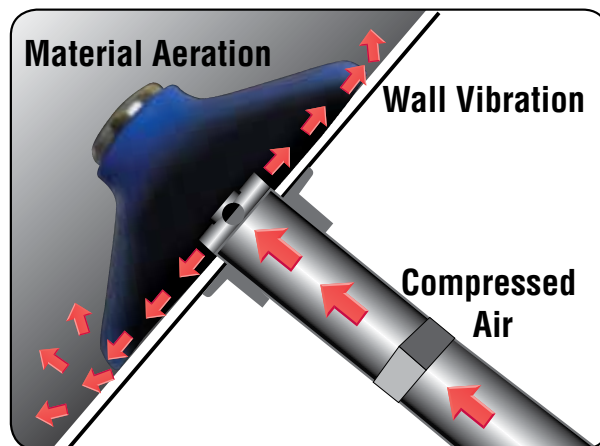
**Aeration** loosens up the product allowing it to flow easier. Minimum back pressure puts air energy where it is need the most – in the silo.

**Directional Air Flow.** The Fluidizer disk forces air to move along the bin wall freeing up product and assuring good cleanout.

**Gentle Vibration** keeps the product flowing without allowing it to compact or plug.

**No Airline Plugging.** Disk seals tightly against the silo wall and prevents airline plugging. Robust Design. The disk will not tear, pick up moisture & is unaffected by temperatures up to 350 F (170 C).

**Material Compatible.** Available in FDA approved silicone rubber in blue and white, FDA approved EPDM rubber in black or white, also Orange High Temp rubber, and now FDA approved grey Metal Detectable.



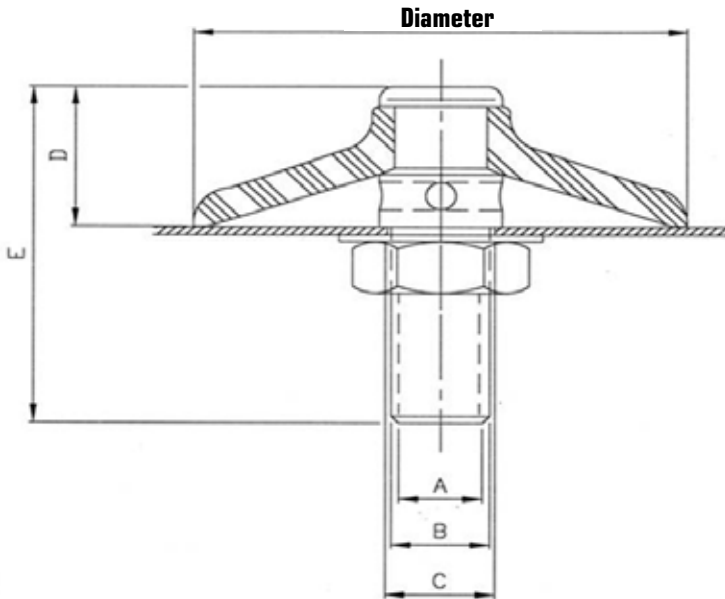
**Hopper cutaway shows Fluidizer in use.**



Since 1985

# Silo Fluidizer Technical Data

Model	Disk Diameter	Stem	A	B	C	D	E	Airline Options
4305MD	4"	Stainless	1/4" NPT	1/2" NPT	7/8" (22mm)	1 3/16" (30 mm)	3" (76mm)	3/8" - 1/2" (10-13mm) Tubing



Model	AIRFLOW REQUIREMENTS
Standard 4305MD	Capacity 10 - 20 CFM @ 20 - 30 PSI (15 - 30m <sup>3</sup> /h @ 1 - 2 bar)

**Engineering Assistance.** Fax or e-mail a sketch or drawing of your chamber, along with a description of your bulk material and we will provide a recommended number and placement of fluidizers for your application the next day.

**Versatility.** Numerous combinations of stems, fittings and airlines to fit your application. Solimar Fluidizers models are available for use with high pressure/low volume compressed air or with low pressure/ high volume blower air.